

Moose Jaw Autism Spectrum Disorder Program
AUTISM PROGRAM
NEXT STEPS AND SUPPORTS FOR YOUR CHILD AND FAMILY

Community Support Service Map
Moose Jaw & Area

Service Name	Service Description	Contact Information	Location / Access
SHA Autism Program	Early screening, funding support, family coaching, and autism-specific community navigation.	Phone: (306) 691-2308 Email: shaasdmoosejaw@saskhealthauthority.ca	Moose Jaw – Local Health Authority
Autism Navigators (SHA)	Assists with funding, service coordination, and planning across Saskatchewan.	Phone: (306) 527-3976 Email: autism.navigation@saskhealthauthority.ca	Provincial Access
Registry of Autism Service Providers (RASP)	Lists approved private providers for therapy, social skills, and respite services.	Website: Provider Registry - Autism Services	Provincial Resource
Let's Soar Program – Métis Nation-Saskatchewan	Provides Métis families with support to access health, education, and social services.	Phone: 1-877-638-4775 Email: LetsSoar@mns.ca Website: Let's Soar Overview	Provincial Access
Jordan's Principle	Supports First Nations children to access timely health, social, and education services.	Phone: 1-855-JP-CHILD (1-855-572-4453) Website: Jordan's Principle - Canada.ca	National / Local Agents
Non-Insured Health Benefits (NIHB)	Provides dental, vision, medical supplies, mental health, and travel coverage for eligible First Nations and Inuit children.	Phone: 1-866-885-3933 Email: sasknihb_inquiries@sac-isc.gc.ca Website: NIHB Program	Federal Program
Ministry of Social Services (MSS)	Provides case management, funding, respite, supported living, and cognitive disability services. May assist families with children in care, adoption, or complex needs.	Phone: (306) 694-3647 Website: MSS – Saskatchewan	Moose Jaw / Provincial Access
Community Living Service Delivery (CLSD)	Supports individuals with intellectual and cognitive disabilities with long-term planning and services.	Phone: (306) 694-3647 Website: CLSD – Saskatchewan	Moose Jaw / Provincial Access
Inclusion Moose Jaw	Provides advocacy, social connections, family events, and support for families of individuals with intellectual and developmental disabilities.	Phone: (306) 692-0688 Email: imj@sasktel.net	Moose Jaw

Early Childhood Intervention Program (ECIP)	Home-based developmental support for children under 6 with developmental delays or disabilities.	Phone: (306) 693-4754 Website: www.ecip.ca	Moose Jaw ECIP Office
Family Resource Centre (FRC)	Free drop-in play spaces, parenting workshops, support groups, and community navigation.	Phone: (306) 690-1372 Website: www.moosejawfrc.ca	Moose Jaw – 1250 11th Ave NW
Moose Jaw Family Services	Offers family counselling, child and youth therapy, parenting classes, family support and community education.	Phone: (306) 694-8133 Website: moosejawfamilyservices.ca	Moose Jaw – 200 Main St. S
Parent Support Groups (Local & Virtual)	Connects parents of children with autism, cognitive disabilities, or developmental delays for peer support and resource sharing.	Contact via SHA Autism Program, Family Resource Centre, or Moose Jaw Family Services	Moose Jaw / Online Options
Parent Counselling Support (SHA)	Mental health counselling for parents and caregivers of children with special needs or developmental challenges.	Phone: (306) 691-6464 Website: SHA Mental Health Services	Moose Jaw – Mental Health Services
Child & Youth Counselling (SHA)	Provides therapeutic support for children and youth experiencing emotional, behavioural, or developmental concerns.	Phone: (306) 691-6464	Moose Jaw – Local Health Services
KidsFirst (SHA)	Intensive home visiting and parenting support for vulnerable families.	Phone: (306) 691-2364 Contact via SHA Public Health	Moose Jaw
Family Outreach Program (SHA)	Provides in-home support, parenting strategies, and links to community services.	Phone: (306) 691-2364 Contact via SHA Public Health	Moose Jaw
Homebase Youth Hub (YMCA)	Drop-in youth space offering social, emotional, and practical supports for ages 12–25.	Phone: (306) 694-5554 Email: homebase@regina.ymca.ca	52 High Street W, Moose Jaw
Big Brothers Big Sisters Moose Jaw	Mentorship programs to support social connection, emotional development, and self-esteem for children and youth.	Phone: (306) 692-8999 Website: www.bigbrothersbigsisters.ca/moosejaw	Moose Jaw
Moose Jaw Parks and Recreation	Offers inclusive recreation options, adaptive programs, and leisure opportunities for children and youth with disabilities.	Phone: (306) 694-4483 Website: www.moosejaw.ca/parks	Moose Jaw
YMCA Moose Jaw	Provides family-oriented recreation, swimming, childcare, and youth leadership programs.	Phone: (306) 692-0688 Website: www.ymcaofregina.org	Moose Jaw
Speech-Language Pathology (SHA)	Therapy for communication, speech, language development, and feeding skills.	Phone: (306) 691-2308 (via SHA Intake)	Moose Jaw – Local Health Services

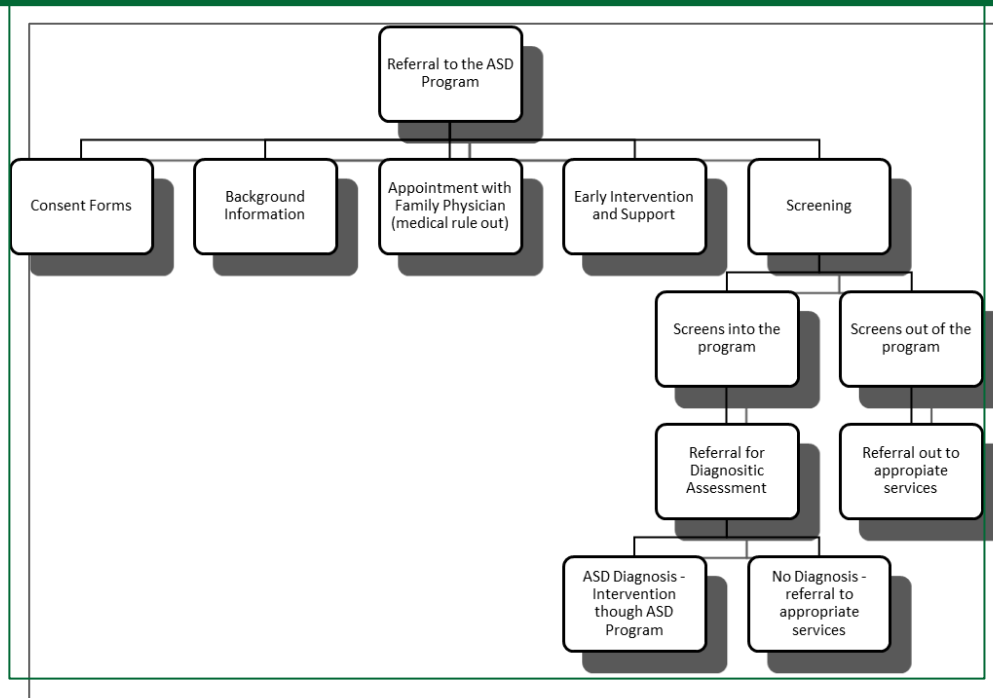
Occupational Therapy (SHA)	Supports sensory needs, motor skills, and functional daily living activities for children and youth.	Phone: (306) 691-2308 (via SHA Intake)	Moose Jaw – Local Health Services
Planned Lifetime Advocacy Network (PLAN / P4P)	Offers disability planning tools, financial security guidance, and community building resources for families.	Website: www.planningnetwork.ca	Online / Provincial Resource
Early Learning Intensive Supports (ELIS)	Preschool-based supports for children with complex needs, including cognitive and developmental disabilities.	Ask your Autism Consultant or preschool provider Websites: Prairie South Schools Holy Trinity Catholic Schools	Moose Jaw – Preschool Settings
Child Disability Benefit (CDB)	Monthly tax-free payment for families caring for a child under 18 with a severe and prolonged disability.	Phone: 1-800-387-1193 Website: Child Disability Benefit - Canada.ca	Federal Program
Disability Tax Credit (DTC)	Non-refundable tax credit to reduce the amount of income tax payable for people with disabilities or their caregivers.	Phone: 1-800-959-8281 Website: Disability Tax Credit - Canada.ca	Federal Program
Moms and Kids Health (SHA)	Offers prenatal, postpartum, breastfeeding, and early parenting support including well-baby clinics. May provide home visits and developmental checks.	Phone: (306) 691-2308 Website: Saskatchewan Health Authority	Moose Jaw – Public Health

Autism Program Library



Autism Program Referral and Early Intervention

Moose Jaw & Area



The Moose Jaw Autism Program supports families and individuals affected by autism through individualized care, community involvement, and innovative programming. Our goal is to empower families, foster development, and strengthen community connections.

Screening and Early Intervention

Screening and early intervention services are available to promote developmental gains and enhance long-term outcomes. Families are guided through the process with compassion and clarity. For additional support contact community organizations (above).

Individualized Funding Support

We assist families in applying for Autism Spectrum Disorder – Individualized Funding (ASD-IF), providing education and coaching on how to use funding effectively to support therapy, learning, and development.

Individualized Therapy

Children and youth receive personalized therapy plans tailored to their strengths, needs, and developmental goals. Plans may include speech-language therapy, occupational therapy, behavioral strategies, and play-based interventions.

Family Support and Education

We provide families with access to:

- In-person and virtual workshops
- Parent coaching and consultation
- Practical resources to help build supportive home environments.

Community Engagement

We collaborate with local partners including:

- Community organizations
- Local schools and educators
- Moose Jaw Early Years Family Resource Centre

Through these partnerships, we offer community programming, social events, and group activities to foster friendships, belonging, and real-world social skill development.

Referral and Consultation Services

We provide consultation to educators, caregivers, and service providers to support inclusion and accommodations in school and community settings.

When specialized or additional services are needed, we offer referrals to trusted providers, community resources and organizations.

Moose Jaw Autism Spectrum Disorder Program
AUTISM PROGRAM
NEXT STEPS AND SUPPORTS FOR YOUR CHILD AND FAMILY

Autism Diagnosis and Support Guide Moose Jaw & Area

STEP 1: Confirm the Diagnosis

You may have received a diagnosis through Saskatchewan Health Authority, School Division or Private Services. You will be provided with the Autism Programs: Proof of Autism Diagnostic Form. Sign and store the original form securely.

This document is required for accessing individualized autism funding and provincial supports.

🔗 For more info: [Autism Services - Saskatchewan.ca](https://autismservices.saskatchewan.ca)

If you have an existing diagnosis and do not have this form, contact SHA Autism Program Consultant for confirmation of diagnosis and/or to have the form signed. You will need a copy of the diagnostic report.

☎ [\(306\) 691-2308](tel:3066912308)

✉ shaasdmoosejaw@saskhealthauthority.ca

STEP 2: Apply for Autism Individualized Funding (ASD-IF)

Apply online at: autismfunding.saskatchewan.ca

Upload your signed diagnostic confirmation form.

A [step-by-step guide](#) is available within the portal for your convenience.

If you require assistance reach out to:

Contact the SHA Autism Program for Moose Jaw & area:

☎ [\(306\) 691-2308](tel:3066912308)

✉ shaasdmoosejaw@saskhealthauthority.ca

If applying for Individual Funding, you will need to bring:

- Child's Birth Certificate
- Your Social Insurance Numbers (SIN)
- Your child's Health Services Number
- Proof of Saskatchewan residency (SGI photo ID, SaskPower, SaskEnergy or a municipal water/utility bill within the last three months)
- Proof of ASD Diagnosis ([ASD Diagnostic Form](#))
- Void Check or Banking Information for Direct Deposit.
- [Direct Deposit Payment Request Form](#)

Funding can be used for services such as:

☐ Occupational therapy (OT)

☐ Speech-language pathology (SLP)

- ☐ Behavioural therapy or consultation
- ☐ Specialized recreation or social skills programs
- ☐ Respite care and parent training

Download the [List of Eligible Services and Expenses](#).

STEP 3: Special Situations

Supports are available through Jordan's Principle, a federal initiative ensuring equal access to health and social services.

☎ [1-855-JP-CHILD](tel:1-855-JP-CHILD)

🌐 [Jordan's Principal Overview](#)

Supports are available through Metis Sask, an initiative providing access to health and other services. This program helps families accessing the educational, health and social supports

☎ [1-877-METISSK](tel:1-877-METISSK)

✉ LetsSoar@mns.ca

🌐 [Metis Amachiwayhaataak Let's Soar Program Overview](#)

Learn about coverage for drugs, dental and vision care, medical supplies and equipment, mental health counselling and medical transportation. Coverage is available for registered First Nations.

☎ [1-866-885-3933](tel:1-866-885-3933)

✉ sasknihb_inquiries@sac-isc.gc.ca

🌐 [NIHB Program Overview](#)

For Children in Ministry of Social Services (MSS) Care:

Contact your assigned social worker to access autism services and funding through MSS channels.

STEP 4: Connect with Saskatchewan Autism Services

Contact the SHA Autism Program for Moose Jaw & area:

☎ [\(306\) 691-2308](tel:(306)691-2308)

✉ shaasdmoosejaw@saskhealthauthority.ca

SHA Autism Programs:

🌐 [SHA Autism Services Locator](#)

Access the Registry of Autism Service Providers (private options like therapy, consultation, and respite):

🌐 [Provider Registry - Autism Services](#)

🌐 [Autism Services Saskatchewan](#)

STEP 5: Understand Funding & Financial Supports

Once you've submitted Part A of the Disability Tax Credit (DTC) to the CRA, a clinician (e.g., Dr. Sonnenberg) will complete and submit Part B.

If approved, you may be eligible for:

Child Disability Benefit

🌐 [Child Tax Benefit – Info – Canada.ca](#)

Registered Disability Savings Plan (RDSP) – Apply through your bank.

🌐 [Disability Tax Credit Info – Canada.ca](#)

Additional SHA child/family programs:

- 🌐 [SHA Child Health Services](#)
- 🌐 [Mom and Kids Health - Saskatchewan](#)

STEP 6: Additional Provincial /Community Supports

Inclusion Saskatchewan – Advocacy, disability navigation, transition planning

- 🌐 inclusionsk.com

Community Living Service Delivery (CLSD) – Services for those with intellectual disabilities or global delays

- 🌐 [CLSD Overview](#)

Early Learning Intensive Supports (ELIS) – For children in preschool with complex needs

👉 Ask your Autism Consultant or preschool provider

- 🌐 [Prairie South School Division](#)
- 🌐 [Holy Trinity Catholic School Division](#)

Moose Jaw Early Years Family Resource Centre (Moose Jaw)

Offers Early Years (0-5) parenting programs, play groups, and community navigation support
Location: 1250 11th Ave NW

☎ (306) 690-1372

✉ office@moosejawfrc.ca

- 🌐 [Moose Jaw Early Years Family Resource Centre](#)

Homebase Youth Hub (Moose Jaw)

Offers support to youth aged 12-25, in reaching their full potential by integrating and co-locating a range of youth-targeted services and supports, using a stepped-care approach.

Location: 52 High Street W

☎ [306-694-5554](tel:306-694-5554)

✉ homebase@regina.ymca.ca

- 🌐 [Homebase Youth Hub](#)

Child Care Subsidy & Assistance

- 🌐 [Early Years & Child Care – Saskatchewan](#)

Planned Lifetime Advocacy Network (PLAN / P4P)

- 🌐 [Plan Institute – P4P Tools](#)

STEP 7: Build a Personal Health & Support Binder

Create a binder or digital file to store:

- Diagnostic forms, assessment reports
- Letters from schools, doctors, or therapists
- Copies of funding approvals and correspondence
- Appointment logs and service notes

💡 Keep this in a fireproof box or backed up digitally (e.g., Google Drive or USB) for easy access during transitions in care or school.

STEP 8: Contact an Autism Navigator

Autism Navigators assist with:

- Funding guidance
- Goal planning for families
- Coordination of services

☎ Keri Whitehead (North, Saskatoon, PA): [\(639\) 471-9892](tel:6394719892)

☎ Allie Ekdahl-Johnston (South/Central incl. Moose Jaw): [\(306\) 527-3976](tel:3065273976)

🌐 [Saskatchewan Autism Navigation](#)

✉ autism.navigation@saskhealthauthority.ca

Medical Follow-Up

Some children may be referred for additional testing (e.g., chromosomal microarray or genetic evaluation). Speak with your family doctor or pediatrician for further referrals.

📖 [Canadian Pediatric Society – Autism Info](#)

🌐 [Mom and Kids Health - Saskatchewan](#)

Step	Resource	Details
1	Diagnostic Confirmation	Sign & keep official form
2	ASD-IF Funding	Apply at autismfunding.saskatchewan.ca
3	Special Situations	Jordan's Principle, Let's Soar Program & MSS involvement
4	SHA Autism Program	ASD Program – Moose Jaw (☎ 306-691-2308)
5	DTC & Financial Supports	Disability Tax Credit, RDSP
6	Provincial Supports	Inclusion SK, CLSD, ELIS, Family Resource Centre
7	Health & Support Binder	Organize key documents
8	Autism Navigator	Keri & Allie – phone support